

USCAN[®]

Total Security[®]



Hardware Catalog



DOOR HARDWARE**Page 1-17**

Door Locks	1-12
Clutched Cylindrical Leverset: Grade 1 - USL 100 Series	1
Clutched Cylindrical Leverset: Grade 1 - USL 100 Series IC-Core	1
Leverset Replacement Latches: Grade 1	1
Clutched Cylindrical Leverset: Grade 2 - USL 200 Series-Clutched	2
Fixed Cylindrical Leverset: Grade 2 - USL 200 Series-Fixed	3
Clutched Cylindrical Leverset: Grade 2 - USL 200 Series IC-Core	3
Cylindrical Lockset: Grade 1 - K100 Series	4
Cylindrical Lockset: Grade 1 - K100 Series IC-Core	4
Lockset Replacement Latches: Grade 1	4
Cylindrical Lockset: Grade 2 - US Series	5
Cylindrical Lockset: Grade 2 - US Series	6
Cylindrical Lockset: Grade 2 - US Series IC-Core	6
Leverset and Lockset Replacement Parts: Grade 2	7
Tubular Lockset: Grade 3 - US 100 Series	7
Tubular Lockset Replacement Parts: Grade 3	7
Cylindrical Lockset: Grade 3 - K300 Series	8
Cylindrical Lockset Replacement Parts: Grade 3	8
Deadbolt Removeable Cylinder: Grade 2 - D130 & D230 Series	9
Deadbolt: Grade 2 - D130 & D230 Series IC-Core	9
Deadbolt Replacement Latches: Grade 2	9
Deadbolt Removeable Cylinder: Grade 3 - D125 & D225 Series	10
Deadbolt: Grade 3 - D108 & D208 Series	10
Deadbolt Replacement Latch: Grade 3	11
Deadbolt Replacement Parts: Grade 2 & 3	11
Deadbolt Screw Pack: Grade 2	11
Universal Key-In-Knob/Lever, Deadbolt Cylinders - UC-CX Series	12
Rim Mount Panic Exit Device - UC-PB Series	13
Panic Exit Device Trim - UC Series	13
Door Closer	14
Door Closer: Grade 1 - 3000 Series	14
Door Closer: Grade 1 - 2000 Series	14
Door Closer: Grade 3 - 1000 Series	14
Electro Magnetic Lock - UC-ML Series	17
Solid Brass Door Viewers - UC Series	17

STORE FRONT HARDWARE**Page 15-16**

Narrow Stile Aluminum Door Deadlatch Lock - UC-DL4510 Series	15
Narrow Stile Aluminum Door Deadbolt Lock - UC-DB2850 Series	15
Narrow Stile Aluminum Door Hook Bolt Lock - UC-HB3820 Series	15
Narrow Stile Aluminum Door Deadlatch Paddle - UC-P5500 Series	16
Narrow Stile Aluminum Door Deadlatch Handle - UC-P5500 Series	16
Narrow Stile Aluminum Door Parts - UC Series	16

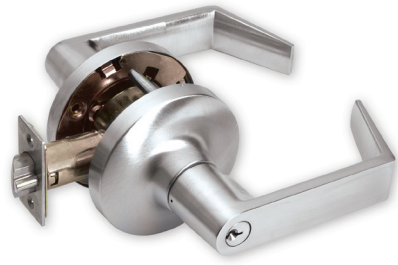
SECURITY HARDWARE PRODUCTS**Page 18-20**

Stainless Steel Round Padlock - R70 Series	18
Solid Brass Rekeyable Padlock - 90/91 Series	18
Solid Brass Padlock - B Series	19
Laminated Steel Padlock - L Series	20

HANDING & FINISH CHARTS**Page 21**

CLUTCHED CYLINDRICAL LEVERSET

Grade 1 - USL 100 Series



- Heavy duty cylindrical "Clutched" Grade 1 lever set.
- Removable outer thru-bolting.
- Adjustable door thickness.
- Interior push and turn button.
- Accepts most manufacturers aftermarket cylinders.
- SC1 keyway.
- Keyed Different.
- 2-3/4" UL listed latchbolt.
- ANSI strike.
- Designed to install with ease.



PART#	MFG#	BACKSET	FUNCTION	KEYWAY	FINISH
900-559	USL110S x 626	2-3/4"	Passage	-	Satin Chrome
900-564	USL110S x 613	2-3/4"	Passage	-	Dark Bronze
900-558	USL140S x 626	2-3/4"	Privacy	-	Satin Chrome
900-567	USL140Sx 613	2-3/4"	Privacy	-	Dark Bronze
900-552	USL150D x 626-KD	2-3/4"	Entrance	SC1	Satin Chrome
900-635	USL150D x 613-KD	2-3/4"	Entrance	SC1	Dark Bronze
900-554	USL170D x 626-KD	2-3/4"	Classroom	SC1	Satin Chrome
900-689	USL170D x 613-KD	2-3/4"	Classroom	SC1	Dark Bronze
900-553	USL180D x 626-KD	2-3/4"	Storeroom	SC1	Satin Chrome
900-586	USL180D x 613-KD	2-3/4"	Storeroom	SC1	Dark Bronze

CLUTCHED CYLINDRICAL LEVERSET

Grade 1 - USL 100 Series IC-Core



IC-Core Cylinder not included

- Heavy duty cylindrical "Clutched" Grade 1 lever set.
- Removable outer thru-bolting.
- Adjustable door thickness.
- Interior push and turn button.
- Accepts most manufacturers aftermarket IC-Cores.
- IC-Core Small Format Best/Falcon Prep.
- Accepts 6 & 7 pin IC-Core cylinders.
- 2-3/4" UL listed latchbolt.
- ANSI strike.
- Designed to install with ease.



PART#	MFG#	BACKSET	FUNCTION	KEYWAY	FINISH
900-555	USL150D-IC x 626	2-3/4"	Entrance	IC-Core	Satin Chrome
900-557	USL170D-IC x 626	2-3/4"	Classroom	IC-Core	Satin Chrome
900-556	USL180D-IC x 626	2-3/4"	Storeroom	IC-Core	Satin Chrome

LEVERSET REPLACEMENT LATCHES

Grade 1



PART#	MFG#	BACKSET	TYPE	FINISH
915-082	USLG1-SL-2-3/8	2-3/8"	Spring Latch	Satin Chrome
915-083	USLG1-SL-2-3/4	2-3/4"	Spring Latch	Satin Chrome
915-084	USLG1-DL-2-3/8	2-3/8"	Dead Latch	Satin Chrome
915-085	USLG1-DL-2-3/4	2-3/4"	Dead Latch	Satin Chrome

DOOR HARDWARE

STORE FRONT HARDWARE

SECURITY HARDWARE PRODUCTS

CLUTCHED CYLINDRICAL LEVERSET

Grade 2 - USL 200 Series-Clutched



- Medium duty cylindrical "Clutched" Grade 2 leverset.
- Removable outer thru-bolting.
- Adjustable door thickness.
- Interior push and turn button.
- Accepts most manufacturers aftermarket cylinders.
- SC1 keyway.
- 2-3/8" and 2-3/4" UL listed latchbolt.
- ANSI strike.
- Designed to install with ease.



DOOR HARDWARE

STORE FRONT HARDWARE

SECURITY HARDWARE PRODUCTS

PART#	MFG#	BACKSET	FUNCTION	KEYWAY	FINISH
960-232	USL212S x 605	2-3/4"	Passage	-	Bright Brass
960-234	USL212S x 613	2-3/4"	Passage	-	Dark Bronze
960-237	USL212S x 626	2-3/8"	Passage	-	Satin Chrome
960-238	USL212S x 625	2-3/4"	Passage	-	Bright Chrome
960-236	USL212S x 626	2-3/4"	Passage	-	Satin Chrome
960-224	USL242S x 605	2-3/4"	Privacy	-	Bright Brass
960-226	USL242S x 613	2-3/4"	Privacy	-	Dark Bronze
960-227	USL242S x 626	2-3/8"	Privacy	-	Satin Chrome
960-230	USL242S x 625	2-3/4"	Privacy	-	Bright Chrome
960-228	USL242S x 626	2-3/4"	Privacy	-	Satin Chrome
960-200	USL252D x 605-KD	2-3/4"	Entrance	SC1	Bright Brass
960-202	USL252D x 613-KD	2-3/4"	Entrance	SC1	Dark Bronze
960-205	USL252D X 626-KD	2-3/8"	Entrance	SC1	Satin Chrome
960-206	USL252D x 625-KD	2-3/4"	Entrance	SC1	Bright Chrome
960-204	USL252D x 626-KD	2-3/4"	Entrance	SC1	Satin Chrome
960-208	USL272D x 605-KD	2-3/4"	Classroom	SC1	Bright Brass
960-210	USL272D x 613-KD	2-3/4"	Classroom	SC1	Dark Bronze
960-213	USL272D x 626-KD	2-3/8"	Classroom	SC1	Satin Chrome
960-214	USL272D x 625-KD	2-3/4"	Classroom	SC1	Bright Chrome
960-212	USL272D x 626-KD	2-3/4"	Classroom	SC1	Satin Chrome
960-216	USL282D x 605-KD	2-3/4"	Storeroom	SC1	Bright Brass
960-218	USL282D x 613-KD	2-3/4"	Storeroom	SC1	Dark Bronze
960-221	USL282D x 626-KD	2-3/8"	Storeroom	SC1	Satin Chrome
960-222	USL282D x 625-KD	2-3/4"	Storeroom	SC1	Bright Chrome
960-220	USL282D x 626-KD	2-3/4"	Storeroom	SC1	Satin Chrome

FIXED CYLINDRICAL LEVERSET

Grade 2 - USL 200 Series-Fixed



- Medium duty cylindrical "Fixed" Grade 2 lever set.
- Removable outer thru-bolting.
- Adjustable door thickness.
- Interior push and turn button.
- Accepts most manufacturers aftermarket cylinders.
- SC1 keyway.
- 2-3/4" UL listed latchbolt.
- ANSI strike.
- Designed to install with ease.



PART#	MFG#	BACKSET	FUNCTION	KEYWAY	FINISH
960-270	USL250D x 626	2-3/4"	Entrance	SC1	Satin Chrome
960-271	USL250D x 605	2-3/4"	Entrance	SC1	Bright Brass
960-272	USL250D x 613	2-3/4"	Entrance	SC1	Dark Bronze
960-275	USL270D x 626	2-3/4"	Classroom	SC1	Satin Chrome
960-276	USL270D x 613	2-3/4"	Classroom	SC1	Dark Bronze
960-280	USL280D x 626	2-3/4"	Storeroom	SC1	Satin Chrome
960-281	USL280D x 613	2-3/4"	Storeroom	SC1	Dark Bronze

CLUTCHED CYLINDRICAL LEVERSET

Grade 2 - USL 200 Series IC-Core



IC-Core Cylinder not included

- Medium duty cylindrical "Clutched" Grade 2 lever set.
- Removable outer thru-bolting.
- Adjustable door thickness.
- Interior push and turn button.
- IC-Core Small Format Best/Falcon Prep that accepts most manufacturers after market IC-Core cylinders.
- Accepts 6 & 7 pin IC-Core cylinders.
- 2-3/4" UL listed latchbolt.
- ANSI strike.
- Designed to install with ease.



PART#	MFG#	BACKSET	FUNCTION	KEYWAY	FINISH
960-240	USL252D-IC x 605	2-3/4"	Entrance	IC-Core	Bright Brass
960-242	USL252D-IC x 613	2-3/4"	Entrance	IC-Core	Dark Bronze
960-246	USL252D-IC x 625	2-3/4"	Entrance	IC-Core	Bright Chrome
960-244	USL252D-IC x 626	2-3/4"	Entrance	IC-Core	Satin Chrome
960-248	USL272D-IC x 605	2-3/4"	Classroom	IC-Core	Bright Brass
960-250	USL272D-IC x 613	2-3/4"	Classroom	IC-Core	Dark Bronze
960-254	USL272D-IC x 625	2-3/4"	Classroom	IC-Core	Bright Chrome
960-252	USL272D-IC x 626	2-3/4"	Classroom	IC-Core	Satin Chrome
960-256	USL282D-IC x 605	2-3/4"	Storeroom	IC-Core	Bright Brass
960-258	USL282D-IC x 613	2-3/4"	Storeroom	IC-Core	Dark Bronze
960-262	USL282D-IC x 625	2-3/4"	Storeroom	IC-Core	Bright Chrome
960-260	USL282D-IC x 626	2-3/4"	Storeroom	IC-Core	Satin Chrome

DOOR HARDWARE

STORE FRONT HARDWARE

SECURITY HARDWARE PRODUCTS

CYLINDRICAL LOCKSET

Grade 1 - K100 Series



- Heavy duty cylindrical grade 1 lockset.
- Adjustable door thickness
- Interior push and turn button.
- Orbit Knob Design.
- Accepts most manufacturers aftermarket cylinders.
- SC1 keyway.
- Keyed Different.
- 2-3/4" UL listed latchbolt.
- T-strike.
- Designed to install with ease.



PART#	MFG#	BACKSET	FUNCTION	KEYWAY	FINISH
901-495	K110S x 613	2-3/4"	Passage	-	Dark Bronze
901-490	K110S x 630	2-3/4"	Passage	-	Stainless Steel
901-485	K140S x 613	2-3/4"	Privacy	-	Dark Bronze
901-480	K140S x 630	2-3/4"	Privacy	-	Stainless Steel
901-456	K150D x 605-KD	2-3/4"	Entrance	SC1	Bright Brass
901-455	K150D x 613-KD	2-3/4"	Entrance	SC1	Dark Bronze
901-450	K150D x 630-KD	2-3/4"	Entrance	SC1	Stainless Steel
901-475	K170D x 613-KD	2-3/4"	Classroom	SC1	Dark Bronze
901-470	K170D x 630-KD	2-3/4"	Classroom	SC1	Stainless Steel
901-465	K180D x 613-KD	2-3/4"	Storeroom	SC1	Dark Bronze
901-460	K180D x 630-KD	2-3/4"	Storeroom	SC1	Stainless Steel

DOOR HARDWARE

STORE FRONT HARDWARE

CYLINDRICAL LOCKSET

Grade 1 - K100 Series IC-Core



- Heavy duty commercial grade 1 lockset.
- Ball design knob.
- Accepts 6 or 7 pin SFIC cores.
- U.L. listed fire rated 2-3/4" latch

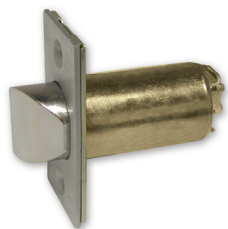


PART#	MFG#	BACKSET	FUNCTION	KEYWAY	FINISH
901-454	K150-IC x 630	2-3/4"	Entry	-	Stainless Steel
901-461	K180-IC x 630	2-3/4"	Storeroom	-	Stainless Steel
901-471	K170-IC x 630	2-3/4"	Classroom	-	Stainless Steel

SECURITY HARDWARE PRODUCTS

LOCKSET REPLACEMENT LATCHES

Grade 1



PART#	MFG#	BACKSET	TYPE	FINISH
915-063	G1-SL x 630	2-3/8"	Spring Latch	Stainless Steel
915-062	G1-SL x 630	2-3/4"	Spring Latch	Stainless Steel
915-044	G1-DL x 630	2-3/8"	Dead Latch	Stainless Steel
915-049	G1-DL x 630	2-3/4"	Dead Latch	Stainless Steel

CYLINDRICAL LOCKSET
Grade 2 - US Series


- Medium duty cylindrical grade 2 lockset.
- Adjustable door thickness
- Interior push and turn button.
- Orbit Knob Design.
- Accepts most manufacturers aftermarket cylinders.
- SC1 keyway.
- Keyed Different.
- 2-3/8" and 2-3/4" UL listed latchbolt.
- T-strike.
- Designed to install with ease.



PART#	MFG#	BACKSET	FUNCTION	KEYWAY	FINISH
900-493	US10S x 605	2-3/4"	Passage	-	Bright Brass
900-569	US10S x 609	2-3/8"	Passage	-	Antique Brass
900-494	US10S x 613	2-3/4"	Passage	-	Dark Bronze
900-495	US10S x 630	2-3/4"	Passage	-	Stainless Steel
900-453	US10S x 630	2-3/8"	Passage	-	Stainless Steel
900-498	US40S x 605	2-3/4"	Privacy	-	Bright Brass
900-572	US40S x 609	2-3/8"	Privacy	-	Antique Brass
900-517	US40S x 613	2-3/4"	Privacy	-	Dark Bronze
900-497	US40S x 630	2-3/4"	Privacy	-	Stainless Steel
900-501	US53P x 605-KD	2-3/4"	Entrance	SC1	Bright Brass
900-500	US53P x 605-KD	2-3/8"	Entrance	SC1	Bright Brass
900-574	US53P x 609-KD	2-3/8"	Entrance	SC1	Antique Brass
900-504	US53P x 613-KD	2-3/4"	Entrance	SC1	Dark Bronze
900-506	US53P x 630-KD	2-3/4"	Entrance	SC1	Stainless Steel
900-505	US53P x 630-KD	2-3/8"	Entrance	SC1	Stainless Steel
900-510	US70P x 630-KD	2-3/4"	Classroom	SC1	Stainless Steel
900-560	US80P x 605-KD	2-3/4"	Storeroom	SC1	Bright Brass
900-512	US80P x 613-KD	2-3/4"	Storeroom	SC1	Dark Bronze
900-511	US80P x 630-KD	2-3/4"	Storeroom	SC1	Stainless Steel
900-514	US80P x 630-KD	2-3/8"	Storeroom	SC1	Stainless Steel

CYLINDRICAL LOCKSET

Grade 2 - US Series



- Heavy duty residential, medium duty commercial lockset.
- Plymouth style knob design.
- SC-1 Keyway 6-Pin.
- Accepts most manufacturers aftermarket cylinders.
- U.L. listed 2-3/8" and 2-3/4" latch.



PART#	MFG#	FUNCTION	BACKSET	KEYWAY	FINISH
900-701	US10S x 630	Passage	2-3/4"	-	Stainless Steel
900-698	US10S x 630	Passage	2-3/8"	-	Stainless Steel
900-700	US10S x 605	Passage	2-3/4"	-	Bright Brass
900-749	US40S x 630	Privacy	2-3/4"	-	Stainless Steel
900-748	US40S x 605	Privacy	2-3/4"	-	Bright Brass
900-537	US53P x 630	Entry	2-3/8"	SC1	Stainless Steel
900-799	US53P x 630	Entry	2-3/4"	SC1	Stainless Steel
900-521	US53P x 605	Entry	2-3/8"	SC1	Bright Brass
900-795	US53P x 605	Entry	2-3/4"	SC1	Bright Brass
900-802	US70P x 630	Classroom	2-3/4"	SC1	Stainless Steel
900-803	US70P x 605	Classroom	2-3/4"	SC1	Bright Brass
900-805	US80P x 630	Storeroom	2-3/4"	SC1	Stainless Steel
900-811	US80P x 605	Storeroom	2-3/4"	SC1	Bright Brass

CYLINDRICAL LOCKSET

Grade 2 - US Series IC-Core



- Medium duty commercial grade 2 lockset.
- Ball design knob.
- Accepts 6 or 7 pin SFIC cores.
- U.L. listed 2-3/4" latch



PART#	MFG#	BACKSET	FUNCTION	KEYWAY	FINISH
901-452	US53-IC x 630	2-3/4"	Entry	-	Stainless Steel
901-457	US53-IC x 613	2-3/4"	Entry	-	Dark Bronze
901-451	US80-IC x 630	2-3/4"	Storeroom	-	Stainless Steel
901-459	US80-IC x 613	2-3/4"	Storeroom	-	Dark Bronze
901-453	US70-IC x 630	2-3/4"	Classroom	-	Stainless Steel

DOOR HARDWARE

STORE FRONT HARDWARE

SECURITY HARDWARE PRODUCTS

LEVERSET & LOCKSET REPLACEMENT PARTS

Grade 2



PART# 914-179



PART# 900-531

PART#	MFG#	BACKSET	TYPE	FINISH
950-038	2-3/8-SL x 605	2-3/8"	Spring Latch	Bright Brass
950-039	2-3/8-SL x 630	2-3/8"	Spring Latch	Stainless Steel
950-036	2-3/4-SL x 605	2-3/4"	Spring Latch	Bright Brass
950-037	2-3/4-SL x 630	2-3/4"	Spring Latch	Stainless Steel
900-442	2-3/8-SL/PL x 605	2-3/8"	Privacy Latch	Bright Brass
900-444	2-3/8-SL/PL x 630	2-3/8"	Privacy Latch	Stainless Steel
900-443	2-3/8-SL/PL x 613	2-3/8"	Privacy Latch	Dark Bronze
900-445	2-3/4-SL/PL x 605	2-3/4"	Privacy Latch	Bright Brass
900-447	2-3/4-SL/PL x 630	2-3/4"	Privacy Latch	Stainless Steel
900-446	2-3/4-SL/PL x 613	2-3/4"	Privacy Latch	Dark Bronze
900-519	2-3/8-DL x 605	2-3/8"	Dead Latch	Bright Brass
900-509	2-3/8-DL x 613	2-3/8"	Dead Latch	Dark Bronze
900-518	2-3/8-DL x 630	2-3/8"	Dead Latch	Stainless Steel
900-520	2-3/4-DL x 605	2-3/4"	Dead Latch	Bright Brass
900-524	2-3/4-DL x 613	2-3/4"	Dead Latch	Dark Bronze
900-515	2-3/4-DL x 630	2-3/4"	Dead Latch	Stainless Steel

PART#	MFG#	DESCRIPTION
914-179	57MM	5" Backset Extension
900-531	Clip Tool	Clip Removal Tool Lockset

DOOR HARDWARE

STORE FRONT HARDWARE

TUBULAR LOCKSET

Grade 3 - US 100 Series

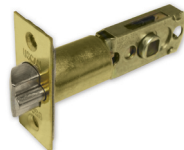


- Medium duty residential tubular grade 3 lockset.
- Adjustable door thickness.
- Interior push button.
- Tulip Knob Design.
- WR3 keyway.
- Keyed Different.
- Adjustable backset U.L. listed latch square corner.
- Square corner full lip strike.
- Designed to install with ease.

PART#	MFG#	BACKSET	FUNCTION	KEYWAY	FINISH
900-487	US110 x 605	Adjustable	Passage	-	Bright Brass
900-488	US110 x 609	Adjustable	Passage	-	Antique Brass
900-489	US130 x 605	Adjustable	Privacy	-	Bright Brass
900-490	US130 x 609	Adjustable	Privacy	-	Antique Brass
900-491	US151 x 605-KD	Adjustable	Entry	WR3	Bright Brass
900-492	US151 x 609-KD	Adjustable	Entry	WR3	Antique Brass

TUBULAR LOCKSET REPLACEMENT PARTS

Grade 3

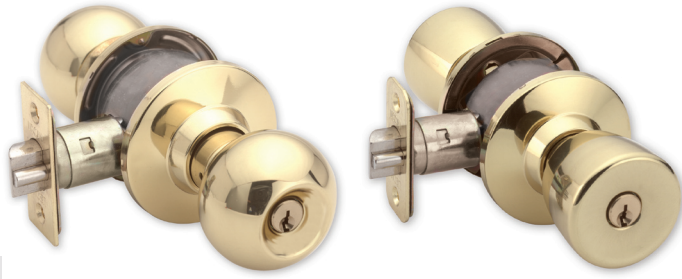


PART#	MFG#	BACKSET	TYPE	FACEPLATE	FINISH
900-523	UCG3-ADJ-SL x 605	Adjustable	Spring Latch	Square	Bright Brass
900-522	UCG3-ADJ-DL x 605	Adjustable	Dead Latch	Square	Bright Brass

SECURITY HARDWARE PRODUCTS

CYLINDRICAL LOCKSET

Grade 3 - K300 Series



- Medium duty cylindrical grade 3 lockset.
- Adjustable door thickness.
- Interior push button.
- Orbit and Tulip Knob Design.
- SC1, WR3 keyway (Orbit)
- Keyed Different.
- Adjustable backset U.L. listed latch square corner (Orbit)
- Adjustable backset U.L. listed latch radius corner (Tulip)
- Square corner full lip strike (Orbit)
- Radius corner full lip strike (Tulip)
- Designed to install with ease.

DOOR HARDWARE

PART#	MFG#	BACKSET	FUNCTION	KEYWAY	FINISH
950-360	K310S x 605 x Orb	Adjustable	Passage	-	Bright Brass
950-365	K310S x 609 x Orb	Adjustable	Passage	-	Antique Brass
950-370	K310S x 630 x Orb	Adjustable	Passage	-	Stainless Steel
950-430	K310S x 605 x Tul	Adjustable	Passage	-	Bright Brass
950-340	K340S x 605 x Orb	Adjustable	Privacy	-	Bright Brass
950-345	K340S x 609 x Orb	Adjustable	Privacy	-	Antique Brass
950-350	K340S x 630 x Orb	Adjustable	Privacy	-	Stainless Steel
950-435	K340S x 605 x Tul	Adjustable	Privacy	-	Bright Brass
950-300	K350D x 605 x Orb	Adjustable	Entry	WR3-KD	Bright Brass
950-305	K350D x 609 x Orb	Adjustable	Entry	WR3-KD	Antique Brass
950-310	K350D x 630 x Orb	Adjustable	Entry	WR3-KD	Stainless Steel
950-405	K350D x 605 x Orb	Adjustable	Entry	SC1-KD	Bright Brass
950-410	K350D x 609 x Orb	Adjustable	Entry	SC1-KD	Antique Brass
950-415	K350D x 630 x Orb	Adjustable	Entry	SC1-KD	Stainless Steel
950-320	K380D x 605 x Orb	Adjustable	Storeroom	WR3-KD	Bright Brass
950-330	K380D x 630 x Orb	Adjustable	Storeroom	WR3-KD	Stainless Steel
950-420	K380D x 605 x Orb	Adjustable	Storeroom	SC1-KD	Bright Brass
950-425	K380D x 630 x Orb	Adjustable	Storeroom	SC1-KD	Stainless Steel

STORE FRONT HARDWARE

SECURITY HARDWARE PRODUCTS

CYLINDRICAL LOCKSET REPLACEMENT PARTS

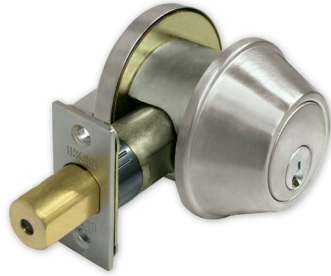
Grade 3



PART#	MFG#	BACKSET	TYPE	FACEPLATE	FINISH
900-530	G3-ADJ-DL x 605	Adjustable	Dead Latch	Square	Bright Brass
900-502	G3-ADJ-DL x 609	Adjustable	Dead Latch	Square	Antique Brass
900-590	G3-ADJ-DL x 630	Adjustable	Dead Latch	Square	Stainless Steel

DEADBOLT REMOVEABLE CYLINDER

Grade 2 - D130 & D230 Series



- Heavy duty commercial Deadbolt.
- Removable SC-1 keyway cylinder.
- New 6-way adjustable 1" deadbolt latch. 2-3/8" - 2-3/4", Drive-In - Standard, Radius - Square.



PART#	MFG#	BACKSET	FUNCTION	KEYWAY	FINISH
900-692	D130 x 605 - KD Single	6-Way Adjustable	Single Cylinder	SC1	Bright Brass
900-693	D130 x 630 - KD Single	6-Way Adjustable	Single Cylinder	SC1	Stainless Steel
900-694	D130 x 613 - KD Single	6-Way Adjustable	Single Cylinder	SC1	Dark Bronze
974-500	D130 x 609 - KD Single	6-Way Adjustable	Single Cylinder	SC1	Antique Brass
900-754	D230 x 605 - KD Double	6-Way Adjustable	Double Cylinder	SC1	Bright Brass
900-755	D230 x 630 - KD Double	6-Way Adjustable	Double Cylinder	SC1	Stainless Steel
900-756	D230 x 613 - KD Double	6-Way Adjustable	Double Cylinder	SC1	Dark Bronze
974-502	D230 x 609 - KD Double	6-Way Adjustable	Double Cylinder	SC1	Antique Brass

DEADBOLT

Grade 2 - D130 & D230 Series IC-Core



- Heavy duty commercial grade 2 deadbolt.
- Accepts 6 or 7 pin SFIC cores.
- 6-way adjustable 1" deadbolt latch.
- Latch is 2-3/8", 2-3/4", Radius, Square, Standard or Drive-In.



IC-Core Cylinder not included

PART#	MFG#	BACKSET	FUNCTION	KEYWAY	FINISH
960-300	D130-IC x 630 x Single	6-Way Adjustable	Single Cylinder	-	Stainless Steel
960-301	D130-IC x 613 x Single	6-Way Adjustable	Single Cylinder	-	Dark Bronze
960-305	D230-IC x 630 x Double	6-Way Adjustable	Double Cylinder	-	Stainless Steel
960-306	D230-IC x 613 x Double	6-Way Adjustable	Double Cylinder	-	Dark Bronze

DEADBOLT REPLACEMENT LATCHES

Grade 2



PART#	MFG#	BACKSET	TYPE	FACEPLATE	FINISH
974-510	9096 x 605	6-Way Adjust	Deadbolt	Multiple	Bright Brass
974-511	9096 x 630	6-Way Adjust	Deadbolt	Multiple	Stainless Steel
974-512	9096 x 609	6-Way Adjust	Deadbolt	Multiple	Antique Brass
974-513	9096 x 613	6-Way Adjust	Deadbolt	Multiple	Dark Bronze

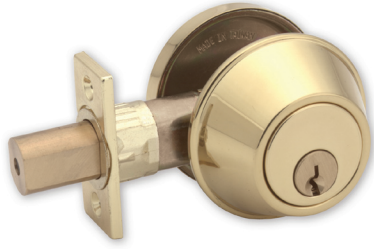
DOOR HARDWARE

STORE FRONT HARDWARE

SECURITY HARDWARE PRODUCTS

DEADBOLT REMOVEABLE CYLINDER

Grade 3 - D125 & D225 Series

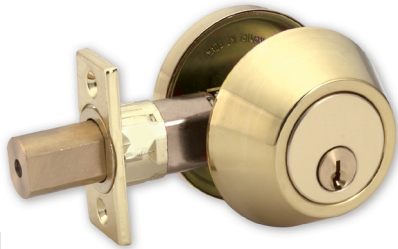


- Medium duty single and double cylinder deadbolt lockset.
- 1-3/8" to 1-3/4" door thickness.
- SC1 keyway.
- Keyed Different.
- 4-Way Adjustable 2-3/8", 2-3/4" backset with removable face for drive-in or standard.
- Includes a 1" throw dead-bolt latch.
- Square corner deadbolt strike.
- Removable cylinder.
- Accepts most manufacturers aftermarket cylinders.
- Designed to install with ease.

PART#	MFG#	BACKSET	FUNCTION	KEYWAY	FINISH
950-100	D125 x 605-KD	4-Way Adjust	Single Cylinder	SC1	Bright Brass
950-105	D125 x 609-KD	4-Way Adjust	Single Cylinder	SC1	Antique Brass
950-110	D125 x 630-KD	4-Way Adjust	Single Cylinder	SC1	Stainless Steel
950-120	D225 x 605-KD	4-Way Adjust	Double Cylinder	SC1	Bright Brass
950-125	D225 x 609-KD	4-Way Adjust	Double Cylinder	SC1	Antique Brass
950-130	D225 x 630-KD	4-Way Adjust	Double Cylinder	SC1	Stainless Steel

DEADBOLT

Grade 3 - D108 & D208 Series



- Medium duty single and double cylinder deadbolt lockset.
- 1-3/8" to 1-3/4" door thickness.
- WR3 & KW1 keyway.
- Keyed Different.
- 4-Way Adjustable 2-3/8", 2-3/4" backset with removable face for drive-in or standard.
- Includes a 1" throw dead-bolt latch.
- Square corner latch plate and deadbolt strike.
- Designed to install with ease.

PART#	MFG#	BACKSET	FUNCTION	KEYWAY	FINISH
900-480	D108 x 605-KD	4-Way Adjust	Single Cylinder	WR3	Bright Brass
900-481	D108 x 609-KD	4-Way Adjust	Single Cylinder	WR3	Antique Brass
900-508	D108 x 630-KD	4-Way Adjust	Single Cylinder	WR3	Stainless Steel
900-450	D108 x 605-KD	4-Way Adjust	Single Cylinder	KW1	Bright Brass
900-484	D208 x 605-KD	4-Way Adjust	Double Cylinder	WR3	Bright Brass
900-513	D208 x 609-KD	4-Way Adjust	Double Cylinder	WR3	Antique Brass
900-516	D208 x 630-KD	4-Way Adjust	Double Cylinder	WR3	Stainless Steel
900-451	D208 x 605-KD	4-Way Adjust	Double Cylinder	KW1	Bright Brass

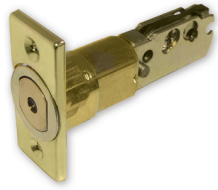
DOOR HARDWARE

STORE FRONT HARDWARE

SECURITY HARDWARE PRODUCTS

DEADBOLT REPLACEMENT LATCH

Grade 3



PART#	MFG#	BACKSET	TYPE	FACEPLATE	FINISH
950-400	UCG3DB4W x 605	4-Way Adjust	Deadbolt	Square	Bright Brass

DEADBOLT REPLACEMENT PARTS

Grade 2 & 3



PART# 914-180



PART# 914-181



PART# 914-184



PART# 914-182

PART#	MFG#	DESCRIPTION
914-185	SCDT-G2/3	D125, D130 Single Cylinder Tailpiece
914-184	DCDT-G2/3	D225, D230 Double Cylinder Tailpiece (Pair)
914-180	SCDT-G3	D108 Single Cylinder Tailpiece
914-181	DCDT-G3	D208 Double Cylinder Tailpiece (Pair)
914-182	DSCDW	Washer for Single Cylinder Tailpieces

DEADBOLT SCREW PACK

Grade 2



PART#	MFG#	DESCRIPTION
914-190	SP-D120 x 630	Screw Pack Single Stainless
914-191	SP-D120 x 605	Screw Pack Single Brass
914-192	SP-D220 x 630	Screw Pack Double Stainless
914-193	SP-D220 x 605	Screw Pack Double Brass

DOOR HARDWARE

STORE FRONT HARDWARE

SECURITY HARDWARE PRODUCTS

UNIVERSAL KEY-IN-KNOB/LEVER, DEADBOLT CYLINDERS

UC-CX Series



- Precision crafted extruded solid brass.
- Includes six tailpieces for levers, knobs and deadbolts.
- Designed to meet most manufacturers depth and spacings.
- Drilled 6 and pinned 5.
- Pinned O-bitted.

DOOR HARDWARE

STORE FRONT HARDWARE

SECURITY HARDWARE PRODUCTS

PART#	MFG#	KEYWAY	FINISH
904-705	UC-CX900 x 3	Arrow	Brass
904-706	UC-CX900 x 26D	Arrow	Satin Chrome
904-707	UC-CX4100 x 3	Z1-59A1-6	Brass
904-708	UC-CX4100 x 26D	Z1-59A1-6	Satin Chrome
904-709	UC-CX4200 x 3	Z1-60-6	Brass
904-710	UC-CX4200 x 26D	Z1-60-6	Satin Chrome
904-711	UC-CX200 x 3	Kwikset	Brass
904-712	UC-CX200 x 26D	Kwikset	Satin Chrome
904-713	UC-CX1000 x 3	6D1R-4R	Brass
904-714	UC-CX1000 x 26D	6D1R-4R	Satin Chrome
904-715	UC-CX700 x 3	6275 LA-LC	Brass
904-716	UC-CX700 x 26D	6275 LA-LC	Satin Chrome
904-717	UC-CX300 x 3	35-101-C	Brass
904-718	UC-CX300 x 26D	35-101-C	Satin Chrome
904-719	UC-CX3100 x 3	35-101-E	Brass
904-720	UC-CX3100 x 26D	35-101-E	Satin Chrome
904-721	UC-CX3000 x 3	35-101-C-K	Brass
904-722	UC-CX3000 x 26D	35-101-C-K	Satin Chrome
904-723	UC-CX800 x 3	Weiser	Brass
904-724	UC-CX800 x 26D	Weiser	Satin Chrome
904-725	UC-CX100 x 3	Yale 8	Brass
904-726	UC-CX100 x 26D	Yale 8	Satin Chrome
904-727	UC-CX1100 x 3	Yale GA	Brass
904-728	UC-CX1100 x 26D	Yale GA	Satin Chrome

RIM MOUNT PANIC EXIT DEVICE

UC-PB Series



- Low Profile Rim mount exit device with touch bar.
- Non-Handed.
- Manufactured from wrought steel and powder coated in two durable commercial finishes.
- Stainless Steel, 3/4" throw latchbolt.
- Stainless Steel, 5/8" dead latch.
- 1/4 turn hex key dogging device.
- U.L. listed.
- Meets ANSI 156.3-2001 Grade 1 standards.
- Covers a standard BHMA 161 cutout.



PART#	MFG#	LENGTH	FINISH
940-200	UC-PB3602 x Alum	36"	Aluminum
940-205	UC-PB3602 x Duro	36"	Dark Bronze
940-210	UC-PB4202 x Alum	42"	Aluminum
940-215	UC-PB4202 x Duro	42"	Dark Bronze

PANIC EXIT DEVICE TRIM

UC Series



PART# 940-220



PART# 940-226



PART# 940-230

- Keyed trim is dual function (Passage & Rigid)
- UC-DP001 Pull: 11.5" H x 3" W.
- Pulls do not come with rim cylinder.

PART#	MFG#	FINISH
940-226	UC-KB005-SC1x630	Stainless Steel
940-224	UC-KB005-SC1x613	Dark Bronze
940-230	UC-LV006-SC1x630	Stainless Steel
940-225	UC-LV006-SC1x613	Dark Bronze
940-220	UC-DP001 x 630	Stainless Steel

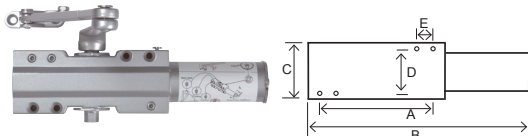
DOOR HARDWARE

STORE FRONT HARDWARE

SECURITY HARDWARE PRODUCTS

DOOR CLOSER Grade 1 - 3000 Series

DOOR HARDWARE



A: 5" B: 11-1/4" C: 2-3/4" D: 2-1/4" E: 1"

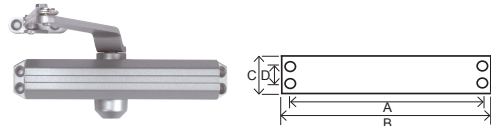
- Adjustable power cast aluminum alloy body closer that is designed for high traffic commercial applications.
- UL A156.4 Grade 1.
- 1 - 6 adjustable power.
- Tri-pack for regular, parallel arm and top jamb installation.
- Adjustable sweep and latching speed valves.
- Non-Handed installation.
- Door Width Maximum: Interior 48", Exterior 60".



PART#	MFG#	FINISH
900-119	UC3000BCBFCV-AL	Aluminum
900-120	UC3000BCBFCV-DU	Dark Bronze

DOOR CLOSER Grade 1 - 2000 Series

STORE FRONT HARDWARE



A: 9-1/16" B: 9-5/8" C: 1-13/16" D: 3/4"

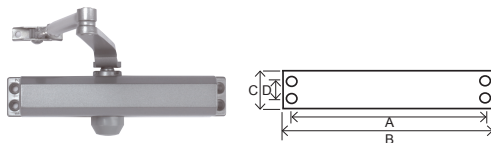
- Adjustable power cast aluminum alloy body closer that is designed for commercial applications.
- UL A156.4 Grade 1.
- 1 - 4 adjustable power.
- Tri-pack for regular, parallel arm and top jamb installation.
- Adjustable sweep and latching speed valves.
- Delayed action control valve.
- Non-Handed installation.
- Door Width Maximum: Interior 48", Exterior 52".



PART#	MFG#	FINISH
900-117	UC2000BCBF-AL	Aluminum
900-118	UC2000BCBF-DU	Dark Bronze

DOOR CLOSER Grade 3 - 1000 Series

SECURITY HARDWARE PRODUCTS



A: 9-1/16" B: 9-5/8" C: 1-13/16" D: 3/4"

- Precision cast aluminum alloy body closer that is designed for light traffic commercial or residential applications.
- Tri-pack for regular, parallel arm and top jamb installation.
- Adjustable sweep, latching speed and back check valves.
- Sized #4 with universal retrofit hole spacing.
- Adjustable power 2-5.
- Non-Handed installation.
- Door Width Maximum: Interior 44", Exterior 48".



PART#	MFG#	FINISH
900-115	UC1000BC-AL	Aluminum
900-116	UC1000BC-DU	Dark Bronze

NARROW STILE ALUMINUM DOOR DEADLATCH LOCK UC-DL4510 Series



Face plate not included

- Heavy-duty deadlatch function lock for narrow stile aluminum door frames and doors.
- Field reversible handing.
- Available 31/32" and 1-1/8" backset.
- Reverse turn of the key while the bolt is held retracted retains the bolt. This enables a passage application.

PART#	MFG#	HANDING	BACKSET
963-120	UC-DL45101	LH	31/32"
963-121	UC-DL45102	RH	31/32"
963-122	UC-DL45103	LH	1-1/8"
963-123	UC-DL45104	RH	1-1/8"

PART#	MFG#	TYPE	FINISH
963-190	UC-DL4511-AL	Flat Face Plate	Aluminum
963-191	UC-DL4511-DU	Flat Face Plate	Dark Bronze
963-195	UC-DL4512-AL	Radius Face Plate	Aluminum
963-196	UC-DL4512-DU	Radius Face Plate	Dark Bronze

NARROW STILE ALUMINUM DOOR DEADBOLT LOCK UC-DB2850 Series



Face plate not included

- Massive laminated stainless steel swinging deadbolt.
- Universal handing.
- Available 7/8", 31/32" and 1-1/8" backset.

PART#	MFG#	HANDING	BACKSET
963-100	UC-DB28501	Universal	7/8"
963-101	UC-DB28502	Universal	31/32"
963-102	UC-DB28503	Universal	1-1/8"

PART#	MFG#	TYPE	FINISH
963-140	UC-DB1851-AL	Flat Face Plate	Aluminum
963-141	UC-DB1851-DU	Flat Face Plate	Dark Bronze
963-145	UC-DB1852-AL	Radius	Aluminum
963-146	UC-DB1852-DU	Radius	Dark Bronze
963-150	UC-DB1854-AL	LH Beveled	Aluminum
963-151	UC-DB1854-DU	LH Beveled	Dark Bronze
963-155	UC-DB1855-AL	RH Beveled	Aluminum
963-156	UC-DB1855-DU	RH Beveled	Dark Bronze

NARROW STILE ALUMINUM DOOR HOOK BOLT LOCK UC-HB3820 Series



Face plate not included

- Massive laminated stainless steel swinging hook bolt.
- Universal handing.
- Available 31/32" and 1-1/8" backset.

PART#	MFG#	HANDING	BACKSET
963-111	UC-HB38202	Universal	31/32"
963-112	UC-HB38203	Universal	1-1/8"

PART#	MFG#	TYPE	FINISH
963-160	UC-HB1821-AL	Flat Face Plate	Aluminum
963-161	UC-HB1821-DU	Flat Face Plate	Dark Bronze
963-165	UC-HB1822-AL	Radius	Aluminum
963-166	UC-HB1822-DU	Radius	Dark Bronze

DOOR HARDWARE

STORE FRONT HARDWARE

SECURITY HARDWARE PRODUCTS

NARROW STILE ALUMINUM DOOR DEADLATCH PADDLE UC-P5500 Series



- Extruded aluminum paddle complete with mounting hardware and cam plug.
- Designed to operate with most narrow stile dead latches.
- Field reversible LH/RH, Push/Pull.

PART#	MFG#	HANDING	FINISH
963-250	UC-P5591-AL	LH	Satin Anodized
963-251	UC-P5592-AL	RH	Satin Anodized
963-255	UC-P5593-DU	LH	Dark Bronze
963-256	UC-P5594-DU	RH	Dark Bronze

DOOR HARDWARE

NARROW STILE ALUMINUM DOOR DEADLATCH HANDLE UC-P5500 Series



- Cast aluminum lever complete with mounting hardware and cam plug.
- Designed to operate with most narrow stile dead latches.
- Heavy-duty spring mechanism prevents lever sag.
- Durable powder coated finish.
- Field reversible LH or RH.

PART#	MFG#	HANDING	FINISH
963-260	UC-L5561-AL	LH	Aluminum
963-261	UC-L5562-AL	RH	Aluminum
963-265	UC-L5563-DU	LH	Dark Bronze
963-266	UC-L5564-DU	RH	Dark Bronze

STORE FRONT HARDWARE

NARROW STILE ALUMINUM DOOR PARTS UC Series



PART# 963-280



PART# 963-270

- Cast aluminum cam plug for use with paddle and lever handles.
- Hardened Steel Free Spinning Mortise Cylinder Guard.

PART#	MFG#	DESCRIPTION	FINISH
963-270	UC-CP5560	Cam Plug	-
963-280	UC-GC5000-AL	Cylinder Guard	Aluminum
963-281	UC-GC5000-DU	Cylinder Guard	Dark Bronze

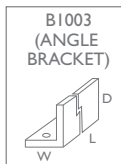
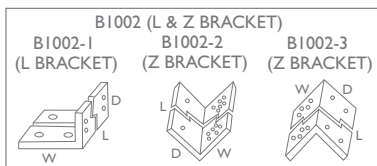
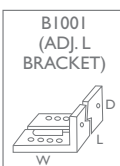
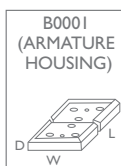
SECURITY HARDWARE PRODUCTS

ELETRO MAGNETIC LOCK

UC-ML Series



- 1200 lbs. of holding force.
- Field selectable 12 or 24V-DC.
- Current draw 500mA 12V, 250mA 24V
- Surface Mounted



PART#	MFG#	FINISH
921-000	UC-ML01 x US28	Satin Aluminum
921-045	UC-ML01 x US10B	Dark Bronze
921-005	UC-AH-B0001	Armature Housing
921-010	UC-ADJB-B1001	Adjustable Bracket
921-015	UC-ZB-B1002-2	Z Bracket
921-020	UC-ANGB-B1003	Angle Bracket
921-025	UC-SB-B1004	Hardware Bracket
921-035	UC-HK	Hardware Package
921-040	UC-AP	Armature Plate
921-030	UC-EB1	PC Board

SOLID BRASS DOOR VIEWERS

UC Series



PART# 909-751



PART# 909-752

- Solid brass body with glass lens.
- Available 160 and 190 degree.

PART#	MFG#	DESCRIPTION	FINISH
909-751	UC10-V1-151	160 Degree	Bright Brass
909-752	UC10-V1-351	190 Degree	Bright Brass

DOOR HARDWARE

STORE FRONT HARDWARE

SECURITY HARDWARE PRODUCTS

STAINLESS STEEL ROUND PADLOCK | R70 Series



- 2-3/4" Diameter stainless steel interior and exterior body.
- Solid brass 4 pin cylinder with brass pins.
- Case hardened 13/32" diameter shackle.

PART#	MFG#	DESCRIPTION
904-789	R70-KD	Stainless Steel Round Padlock
904-788	R70-KA1	Stainless Steel Round Padlock
904-790	R70-KA2	Stainless Steel Round Padlock
904-791	R70-KA3	Stainless Steel Round Padlock
933-875	KB-R70	Key Blank

DOOR HARDWARE

SOLID BRASS REKEYABLE PADLOCK | 90/91 Series



- 1-3/4" width solid brass construction body.
- Solid brass 6 pin cylinder with brass pins.
- 5/16" diameter x 1" length case hardened steel shackle.
- Available in 7 popular commercial and residential keyways.
- Available Key retaining and Non Key retaining.

90 KEY RETAINING

PART#	MFG#	KEYWAY
904-482	90/45-400-KR	Corbin Z1-60-6
904-496	90/45-200-KR	Kwikset
904-468	90/45-700-KR	Sargent LA-LC
904-497	90/45-300-KR	35-101-C
904-499	90/45-3000-KR	35-101-C-K
904-494	90/45-800-KR	Falcon/Weiser
904-495	90/45-100-KR	Yale 8

91 NON KEY RETAINING

PART#	MFG#	KEYWAY
904-483	91/45-400-NKR	Corbin Z1-60-6
904-478	91/45-200-NKR	Kwikset
904-469	91/45-700-NKR	Sargent LA-LC
904-479	91/45-300-NKR	35-101-C
904-493	91/45-3000-NKR	35-101-C-K
904-487	91/45-800-NKR	Falcon/Weiser
904-477	91/45-100-NKR	Yale 8

STORE FRONT HARDWARE

SECURITY HARDWARE PRODUCTS

SOLID BRASS PADLOCK

B Series

- Solid brass construction body.
- Solid brass cylinder and pins.
- Double locking chrome plated hardened steel shackle (excluding 20mm)
- 20/30mm are keyed 4 pin.
- 40/50mm are keyed 5 pin.



PART# 904-750



PART# 904-760



PART# 904-770



PART# 904-780

PART#	MFG#	BODY WIDTH	SHACKLE DIA. X LTH.
904-750	B20-KD	3/4"	1/8" x 1/2"
904-752	B20-KA1	3/4"	1/8" x 1/2"
904-754	B20-KA2	3/4"	1/8" x 1/2"
904-756	B20-KA3	3/4"	1/8" x 1/2"
904-760	B30-KD	1-1/8"	3/16" x 5/8"
904-762	B30-KA1	1-1/8"	3/16" x 5/8"
904-764	B30-KA2	1-1/8"	3/16" x 5/8"
904-766	B30-KA3	1-1/8"	3/16" x 5/8"
904-770	B40-KD	1-1/2"	1/4" x 1"
904-772	B40-KA1	1-1/2"	1/4" x 1"
904-774	B40-KA2	1-1/2"	1/4" x 1"
904-776	B40-KA3	1-1/2"	1/4" x 1"
904-780	B50-KD	2"	5/16" x 1"
904-782	B50-KA1	2"	5/16" x 1"
904-784	B50-KA2	2"	5/16" x 1"

PART#	MFG#	DESCRIPTION
933-870	KB2000	20mm Key Blank
933-872	KB3040	30/40mm Key Blank
933-874	KB5060	50mm Key Blank

DOOR HARDWARE

STORE FRONT HARDWARE

SECURITY HARDWARE PRODUCTS

LAMINATED STEEL PADLOCK

L Series

- Galvanized laminated steel plated body.
- Solid brass cylinder and pins.
- Double locking chrome plated hardened steel shackle.
- 30mm is keyed 4 pin with M2 keyway.
- 40/45/50mm are keyed 4 pin with M1 keyway.



PART# 904-650



PART# 904-660



PART# 904-680



PART# 904-690

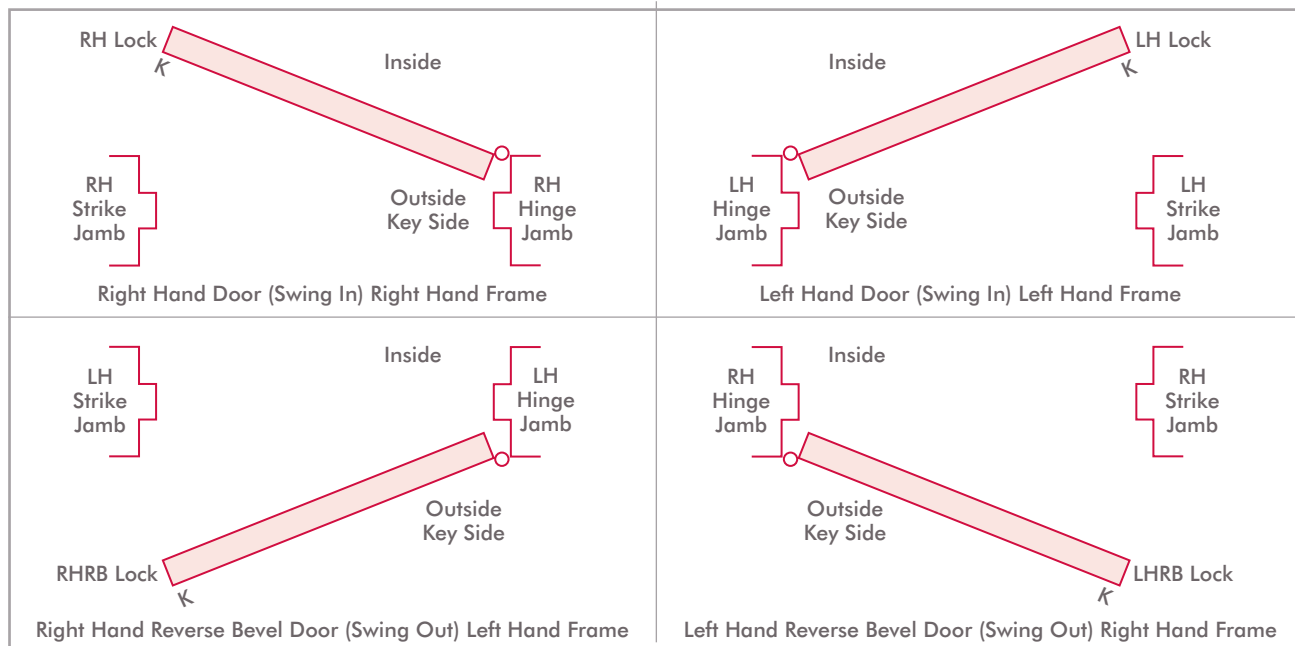
PART#	MFG#	BODY WIDTH	SHACKLE DIA. X LTH.
904-650	L30-KD	1-1/8"	3/16" x 9/16"
904-651	L30-KA1	1-1/8"	3/16" x 9/16"
904-652	L30-KA2	1-1/8"	3/16" x 9/16"
904-653	L30-KA3	1-1/8"	3/16" x 9/16"
904-660	L40-KD	1-1/2"	9/32" x 3/4"
904-664	L40-KA1	1-1/2"	9/32" x 3/4"
904-666	L40-KA2	1-1/2"	9/32" x 3/4"
904-667	L40-KA3	1-1/2"	9/32" x 3/4"
904-668	L40-KA4	1-1/2"	9/32" x 3/4"
904-669	L40-KA5	1-1/2"	9/32" x 3/4"
904-680	L45-KD	1-3/4"	5/16" x 15/16"
904-685	L45-KA1	1-3/4"	5/16" x 15/16"
904-686	L45-KA2	1-3/4"	5/16" x 15/16"
904-687	L45-KA3	1-3/4"	5/16" x 15/16"
904-690	L50-KD	2"	3/8" x 1"
904-695	L50-KA1	2"	3/8" x 1"
904-696	L50-KA2	2"	3/8" x 1"
904-697	L50-KA3	2"	3/8" x 1"

DOOR HARDWARE

STORE FRONT HARDWARE

SECURITY HARDWARE PRODUCTS

HANDING CHART



FINISH CHART

DESCRIPTION	U.S. FINISH	BASE BHMA
Bright Brass, Clear Coated	US3	605
Satin Brass, Clear Coated	US4	606
Satin Brass, Blackened, Satin Relieved, Clear Coated	US5	609
Satin Bronze, Clear Coated	US10	612
Dark Oxidized Satin Bronze, Oil Rubbed	US10B	613
Satin Nickel Plated, Clear Coated	US15	619
Satin Nickel Plated, Blackened, Satin Relieved, Clear Coated	US15A	620
Bright Chromium Plated over Nickel	US26	625
Satin Chromium Plated over Nickel	US26D	626
Satin Aluminum, Clear Anodized	US28	628
Satin Stainless Steel	US32D	630
Aluminum Painted	US28	689
Dark Bronze Painted	US20A	690

USCAN[®]

Total Security[®]

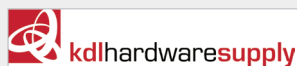


Hardware Catalog



Doyle Security Products

2211 West River Road North
Minneapolis MN 55411
Local: 612-521-6226
Toll Free: 1-800-333-6953
Fax: 612-521-0166
E-Mail: sales@doylesecurity.com
Website: doylesecurity.com



KDL Hardware Supply, Inc.

850 Poplar Place S.
Seattle, WA 98124
Local: 206-682-7383
Toll Free: 1-800-926-7716
Fax: 1-800-524-9305
E-Mail: admin@kdllink.com
Website: www.kdlhardware.com



Fried Brothers, Inc.

467 North 7th Street
Philadelphia, PA 19123
Local: 215-627-3205
Toll Free: 1-800-523-2924
Fax: 1-800-541-3489
E-Mail: fbisecurity@fbisecurity.com
Website: www.fbisecurity.com



Hans Johnsen Company

8901 Chancellor Row
Dallas, Texas 75247-5363
Local: 214-879-1550
Toll Free: 1-888-879-1500
Fax: 1-800-967-4250
E-Mail: lock@hjc.com
Website: www.hjc.com



Robert Skeels & Company

1910 E. Dominguez Street
Carson, CA 90810
Local: 310-639-7240
Toll Free: 1-800-734-4539
Fax: 310-639-7569
E-Mail: sales@skeels.com
Website: www.skeels.com



Security Distributors Inc.

8901 Chancellor Row
Dallas, Texas 75247-5363